



SIBIA - Data warehouse and analysis

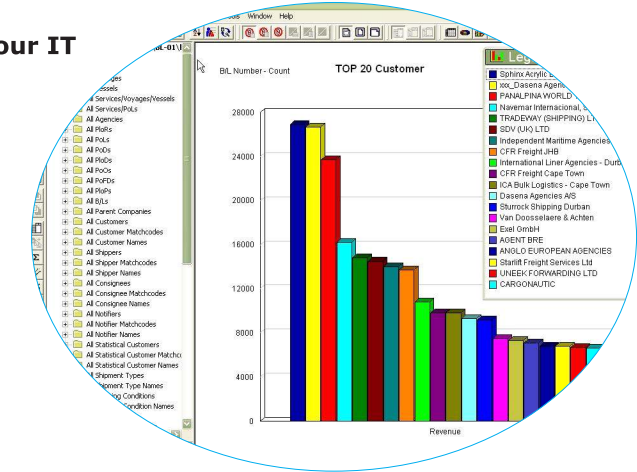
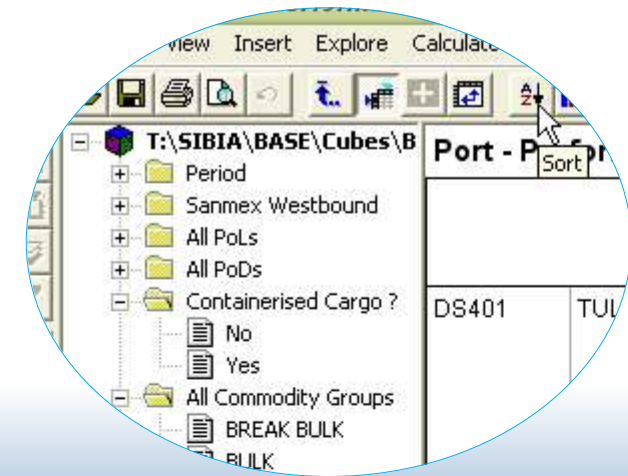
With a capable shipping solution like LIMA or ALFA your IT gathers heaps of valuable data. The crucial boost to ROI, though, is a thorough and online management analysis of these data, your Business Intelligence. This is the name that Cognos applies to an application which gives you the transparency of business processes needed for an efficient use of any IT system.

SIBIA guides you through the complex layers and dimensions of the business events and helps you recognise where to hone business performance.

Why is Cognos the core of SIBIA?

It is simply the best. With Cognos Business Intelligence behind SIBIA the system allows ultra-fast user-defined online data evaluation which is as easy to use as any drag-and-drop routine you perform on your computer.

Instant reports are generated from multi-dimensional data cubes which hold and update information according to your specifications. A single click on a pre-defined



report gathers the necessary data from the chosen PowerCube and presents it in realtime on your screen. Define as many PowerCubes and as many reports as you need to know your business processes in depth and come to the right decisions at the right time.

Blending into your environment

Report formats rely on XML, so you can use whatever client is your personal favorite. Choose the Window, Web or Excel client and work with your accustomed clicks and key strokes multi-dimensional analyses, directed by user-friendly, graphically assisted screens.





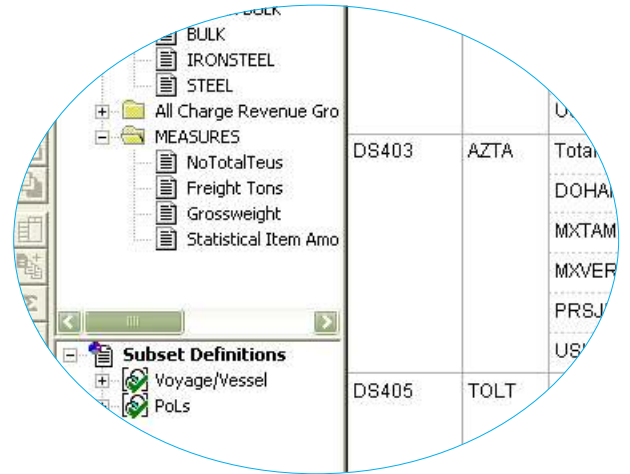
SIBIA - Data warehouse and analysis

Where the data comes from

The PowerCubes select their data from the relational database that lies beneath all Softship applications and is fed by the modules deployed in your company such as LINE, CMC, AIDA, VOYCES etc.

Thanks to the one-input-only principle your data access is complete and includes all information generated in the departments or received by related business partners during the day-to-day business.

You analyse large, complex data sets with an easy-to-use, drag-and drop user interface, pivoting, and filtering.



Features

- Analysis of all data collected in the Softship Suites database
- Deep comparative analysis of business performance across multiple dimensions (service, vessel, voyage, PoL, PoD, customer, etc.)
- Analysis of large, complex data sets with an easy-to-use, drag-and drop user interface, pivoting and filtering
- Managed business reports, dashboards and ad hoc queries
- Reports in all desired formats: Email, HTML, PDF, Microsoft Excel, CSV and XML
- Reducing of IT effort and reporting backlog through drag-and-drop formatting and user self-service
- Highest scalability and user-friendliness



Softship AG
Headquarters
Notkestr. 9
D - 22607 Hamburg

Fon +49.40.89.06.8-0
Fax +49.40.89.06.8-500
Email team_ham@softship.com
URL www.softship.com

